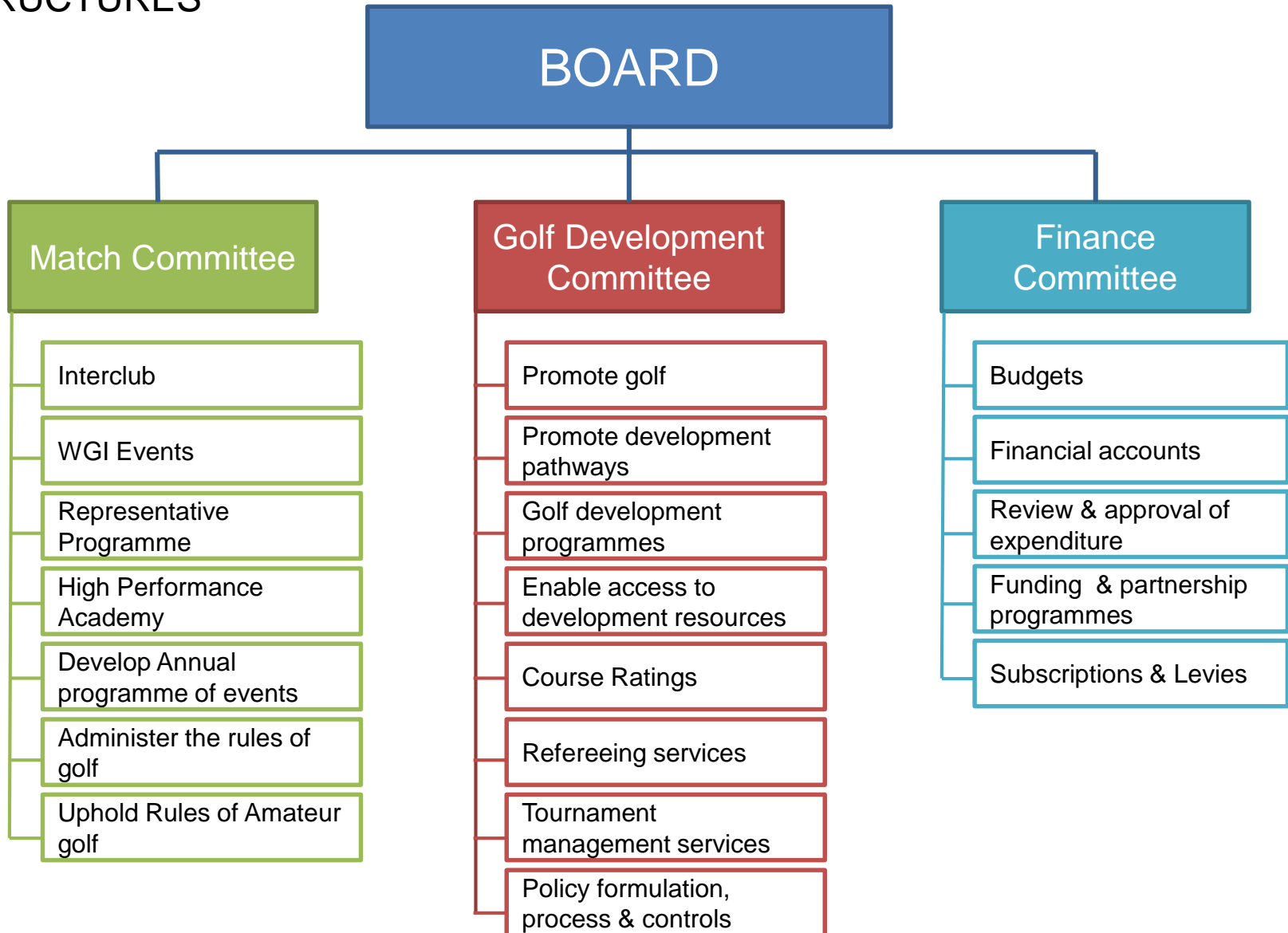


# 2016 COMMITTEE STRUCTURES





# BOARD

## **Composition:**

- A president and six Directors – all of whom must be a financial member of a Club
- Expected composition post AGM (2016)
  - Marty Scott (President)
  - Stephen Bridle (Chair)
  - Liz Mclean
  - Roselee Thurston
  - Di Patchett
  - Steve Weir
  - Director (vacant position)

**Role:** Are the executive of Wellington Golf, manage the affairs of Wellington Golf and control its finances

**Meetings frequency:** At least 6 Board meetings per year.

## **Meeting dates:**

12<sup>th</sup> Apr, 24<sup>th</sup> May, 28<sup>th</sup> Jun, 2<sup>nd</sup> Aug, 6<sup>th</sup> Sept, 11<sup>th</sup> Oct, 15<sup>th</sup> Nov & 20<sup>th</sup> Dec



# MATCH COMMITTEE

## **Composition:**

- 7 members, with WGI Board member as Chair
- WGI representatives
  - Roselee Thurston (Chair)
  - Steve Weir (Board)
  - WGI Staff member
- Possible representatives
  - Men's Interclub representative
  - Women's Interclub representative
  - Junior Convener Representative
  - Selection panel representative
  - 9-hole ladies representative

**Role:** To manage and control golf in the Wellington District in accordance with the powers delegated to them from the Board.

**Meetings frequency:** Approximately every 6-8 weeks.

## **Initial meeting dates:**

5<sup>th</sup> May (TBC), 14<sup>th</sup> Jun, 19<sup>th</sup> Jul, 23<sup>rd</sup> Aug, 27<sup>th</sup> Sept, 25<sup>th</sup> Oct & 6<sup>th</sup> Dec



# GOLF DEVELOPMENT COMMITTEE

## **Composition:**

- 7 members, with WGI Board member as Chair
- WGI representatives
  - Stephen Bridle (Chair)
  - Liz McLean (Board)
  - WGI staff member
- Possible representatives
  - Eagles Representative
  - Junior Representative x2
  - Academy (Development) representative
  - Wellington Coach

**Role:** To develop golf in the Wellington District in accordance with the powers delegated to them from the Board

**Meetings frequency:** Approximately 6 meetings per annum.

## **Meeting dates:**

17<sup>th</sup> May, 21<sup>st</sup> Jun, 26<sup>th</sup> Jul, 23<sup>rd</sup> Aug, 20<sup>th</sup> Sept, 18<sup>th</sup> Oct



# FINANCE COMMITTEE

## **Composition:**

- 4 members, with WGI Board member as Chair
- WGI representatives
  - Steve Weir (Chair)
  - Di Patchett
  - Haydee Wilton - Support officer
- Possible representatives
  - Accountancy/financial management experience

**Role:** To manage and control the finances of Wellington Golf in accordance with the powers delegated to them from the Board

**Meetings frequency:** Approximately every 6-8 weeks, prior to Board meetings.

## **Meeting dates:**

5<sup>th</sup> May, 17<sup>th</sup> May, 21<sup>st</sup> Jun, 26<sup>th</sup> Jul, 30<sup>th</sup> Aug, 4<sup>th</sup> Oct, 8<sup>th</sup> Nov, 13<sup>th</sup> Dec



## BOARD “PORTFOLIOS”

- Match Committee
  - Roselee Thurston (Chair)
  - Steve Weir
- Golf Development Committee
  - Stephen Bridle (Chair)
  - Liz McLean
- Finance Committee
  - Steve Weir (Chair)
  - Di Patchett

**NB:** WGI President – Martin (Marty) Scott has oversight across all